

| REV | LOCATIONS | DESCRIPTION                      | DATE      | REVISER | APPD |
|-----|-----------|----------------------------------|-----------|---------|------|
| 1   | △         | Update dimensions and tolerances | 08/AUG/25 | MATT    | LEO  |

SPECIFICATIONS

Electrical

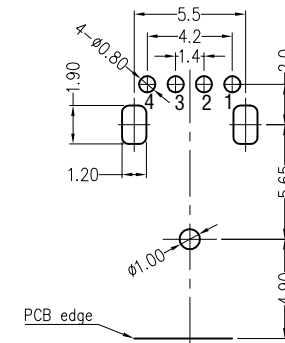
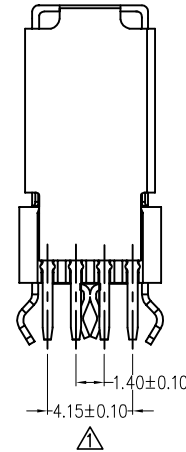
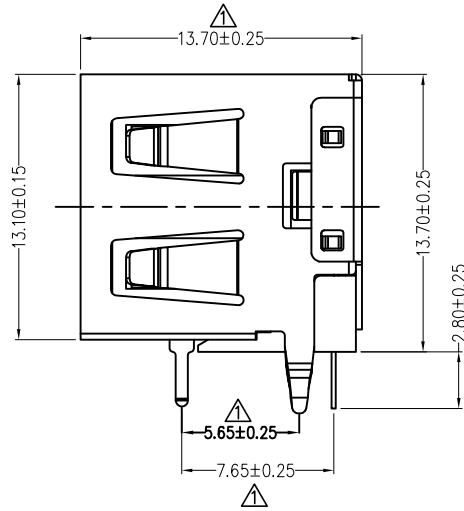
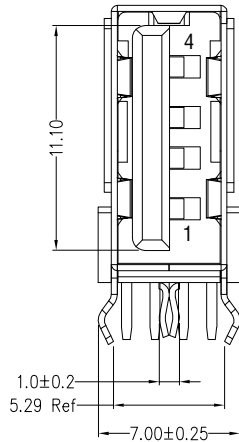
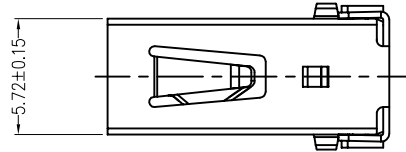
Current Rating: 1.5A AC(rms)/DC  
Voltage Rating: 30V AC(rms)/DC  
Contact Resistance: 30 mΩ Max  
Withstanding Voltage: 500V AC r.m.s  
Insulation Resistance: 1000 MΩ Min  
Temperature Range-Operating: -40°C~+85°C

Mechanical

Insertion Force: 3.57Kgf Max  
Withdrawal Force: 1.02Kgf Min  
Terminal retention: 1.0kgf Min  
Durability:1500 Cycles

Material and Plating

Housing: PBT (UL 94V-0) Black/White  
Terminal: Copper alloy/Gold 0.025um on contact area and tin plated on tails  
Shell: SPCC/Nickel plated over all



Recommended P.C.Board Layout  
General tolerances: ±0.05mm

Ordering Informaion

FUS 2 94 - F D B XX K  
1 2 3 4 5 6 7 8

|            |                 |                   |          |                   |               |                      |             |
|------------|-----------------|-------------------|----------|-------------------|---------------|----------------------|-------------|
| 1 Category | 2 Series Number | 3 Distinction No. | 4 Type   | 5 Assembly Layout | 6 Entry Angle | 7 Color-Resin        | 8 Packaging |
| FUS-USB    | 2-USB 2.0       | 94                | F-Female | D-DIP             | B-90° Angle   | BK-Black<br>WH-White | K-Tray      |

|                         |                                       |              |            |           |  |          |                                     |
|-------------------------|---------------------------------------|--------------|------------|-----------|--|----------|-------------------------------------|
| THIRD ANGLE PROJECTION  | GENERAL TOLERANCES (UNLESS SPECIFIED) |              | APPROVE BY | DATE      | PART NO.   | ITEM NO. | <br>Building Technology Cornerstone |
|                         | X. ±0.30                              | X.* ±5°      | FRANK      | 27/MAY/20 | FUS294-FDBXXK  | FUS294   |                                     |
| DESIGN UNITS Metric(mm) | X.X ±0.20                             | X.X* ±2°     | CHECKED BY | DATE      | TITLE  |          | REV 1                               |
| SCALE                   | X.XX ±0.15                            | X.XX* ±1°    | CHERRY     | 27/MAY/20 | USB A-type<br>4Circuits 90°Angle Female(DIP)   |          | SHEET NO. 1/1                       |
| SIZE                    | X.XXX ±0.10                           | X.XXX* ±0.5° | DRAWN BY   | DATE      | THIS DRAWING CONTAINS INFORMATION THAT IS PROPRIETARY TO TXGA INDUSTRIAL ELECTRONICS(S.Z)CO.,LTD AND SHOULD NOT BE USED WITHOUT WRITTEN PERMISSION |          |                                     |
| 5:1                     |                                       |              | MATT       | 27/MAY/20 |  |          |                                     |